

FOR

LEASE

---



500 to 8,000 Square Feet of Retail/Office Space

## Hutton Building

Spokane, WA



---

t) 509.755.5555 f) 509.747.1915 9 South Washington Street, Spokane, WA 99201 [www.conoverbond.com](http://www.conoverbond.com)

# Hutton Building

**LOCATION** · 9 S Washington Street, Downtown Spokane, WA.

**FOR LEASE** · 500–8,000 square feet, easily divisible.

**TIMING** · Available Now!

**PARKING** · On-site Parking.

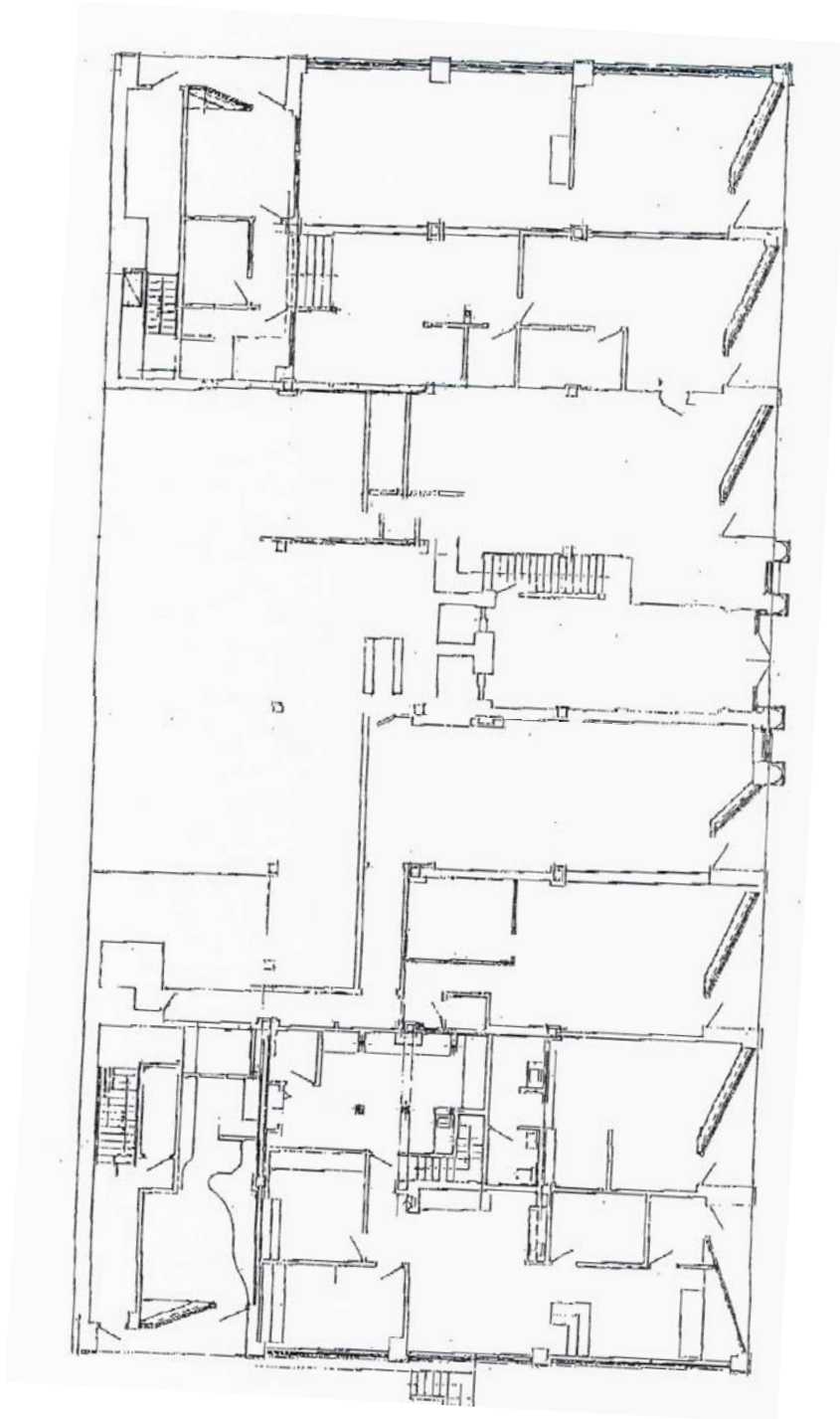


**THE BUILDING** · Standing as a premier landmark building, the Hutton Building has been home to many top Spokane companies for almost 100 years. Its historic elegance and modern amenities make it a desirable location to meet your business needs. The building offers a myriad of services to its tenants including: state-of-the-art technology, prime downtown location, flexible floor plans, on-site coffee house, basement storage, and easy freeway access.

**THE AREA** · In the last several years the city has experienced a renaissance with \$2 billion in new investment. Condominium projects are underway, new restaurants and shops are opening, and street improvements are having a tremendous impact. The Hutton Building is rapidly changing the dynamic of downtown Spokane. From the on-site Cabin Coffee to downtown Spokane's ever-expanding list of amenities— the Hutton is right in the middle of it all.

# Hutton Building

## RETAIL FLOOR PLAN

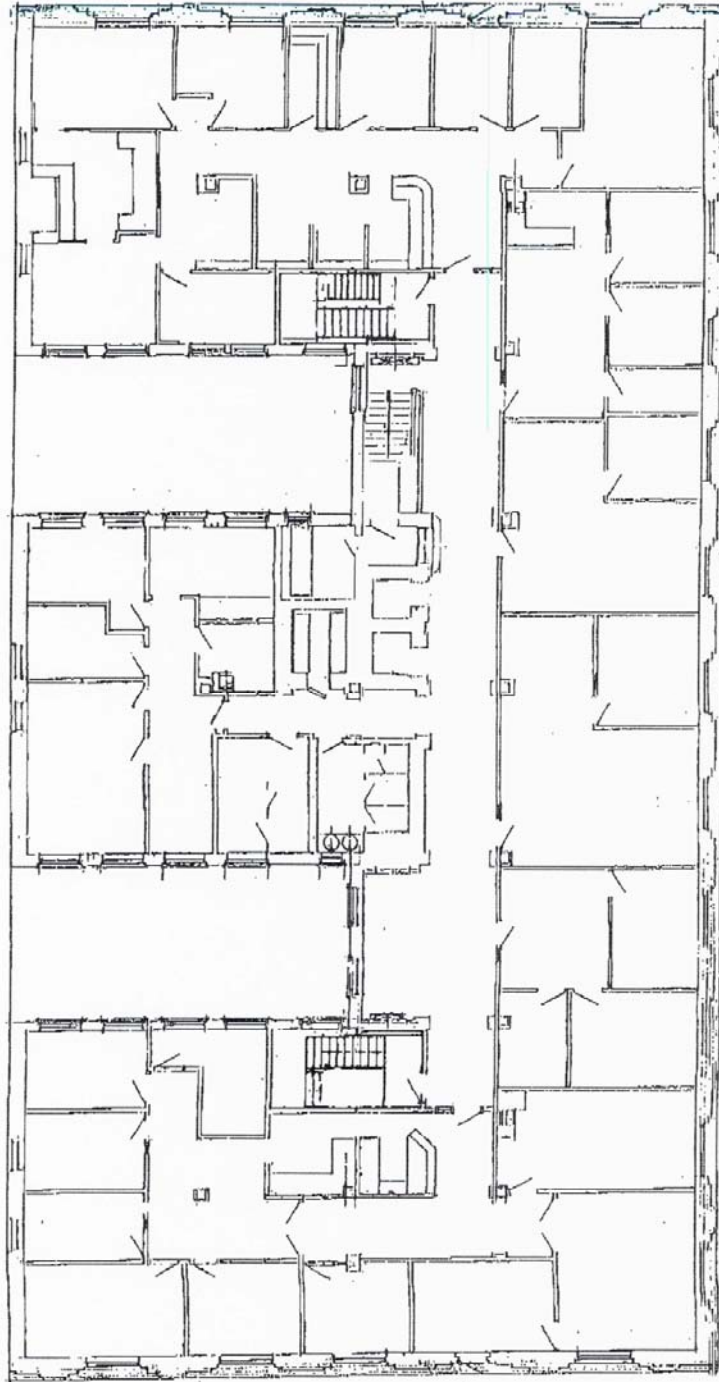


Facing West (toward Washington Street)

1,500–5,000 Square Feet of Retail Space Available.

# Hutton Building

## 7th FLOOR PLAN



Facing West (toward Washington Street)

500—8,000 Square Feet of Office Space Available.

# Hutton Building

AERIAL VIEW



Located on Washington Street between 1st Avenue and Sprague Avenue, Two blocks from Interstate 90 and steps from dining, hotels, and entertainment.